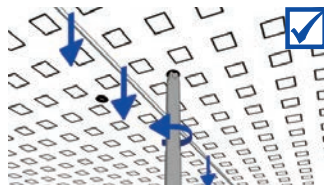


Check panel joint areas and screw heads and adjust any height discrepancies using a screwdriver.



Prime ceiling surface with Vogl Supergrund LF. Subbase must be dry and free from dirt and separating substances. Apply primer in undiluted state using lambskin roller.

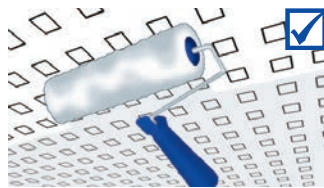
Drying time: 12 h



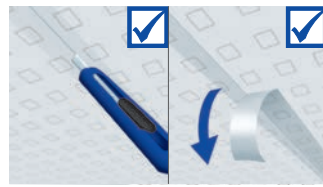
General site conditions / Manufacturer's instructions:

- Store primer, adhesive and acoustic plaster in ** frost-free environment **
- Reclose containers for extended work breaks
- Stir all materials well before use
- Working temperature should be at least +18 °C and job site temperature not below +10 °C
- Relative humidity: 40 - 80 %
- Self-levelling, cement or asphalt screeds must be fully dried – make sure there is no residual moisture
- Avoid shock heating or cooling of rooms during installation or drying times to prevent cracking
- Store away from sun and heat

Apply VoglToptec Special Adhesive generously and evenly using lambskin roller and immediately install plaster base fleece into wet adhesive bed pushing it in with a wallpaper smoother. **Do not** spray-apply adhesive.

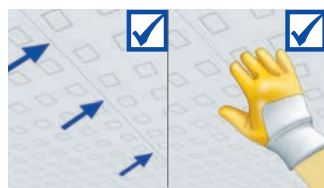


While applying fleece, make sure that special adhesive has not started to dry as this can cause bubbles. Place further lengths of plaster base fleece overlapping (5 - 10 cm) and separate using a double cut.



Check surface and joints. There must not be any adhesive on visible face of fleece (light marks).

Drying time: Min. 12 h



Stir VoglToptec Nano SF acoustic plaster slowly before use (2-3 minutes).

VoglToptec Nano SF = ready-mix



Final coating of acoustic plaster - Manufacturer's instructions:

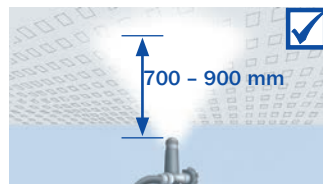
- Machine requirements: Plaster spray system with worm conveyor (e.g. Strobot 204S) or delivery pump (e.g. InoBeam M8) and high-performance compressor
- Spray distance (nozzle to ceiling) approx. 700 - 900 mm
- Air flow 1.5 - 2.0 bar
- Nozzle size 4 - 6 mm (depending on desired texture)
- Application quantities:

1st spray application approx.	700 g/m ²
2nd spray application approx.	900 g/m ²
3rd spray application approx.	1,100 g/m ²
Total approx.	2,700 g/m ²

Apply first layer by spraying-on acoustic plaster in circular motion.

Attention – avoid development of paint mist; holes must remain visible.

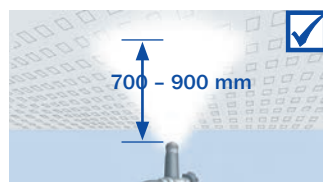
Drying time: 5 h



Application quantity
approx. 700 g/m²

After drying period, apply 2nd coat to ceiling, also in circular motion; holes still slightly visible.

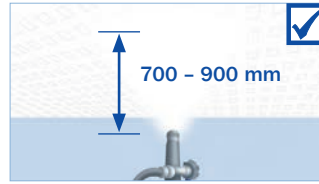
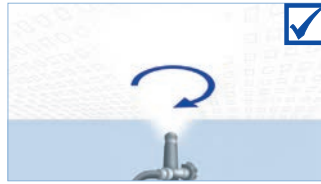
Drying time: 12 h



Application quantity
approx. 900 g/m²

After drying period, apply 3rd coat to ceiling, also in circular motion; holes no longer visible.

Drying time: 12 h



Application quantity
 approx. 1,100 g/m²

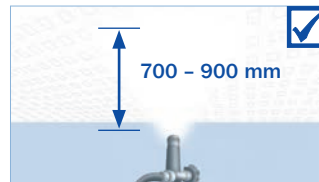
Renovation / renewal of acoustic plaster coating

To remove any soiling, ceiling can be given another machine-applied coating. Before application, sweep ceiling with a fine hair broom.

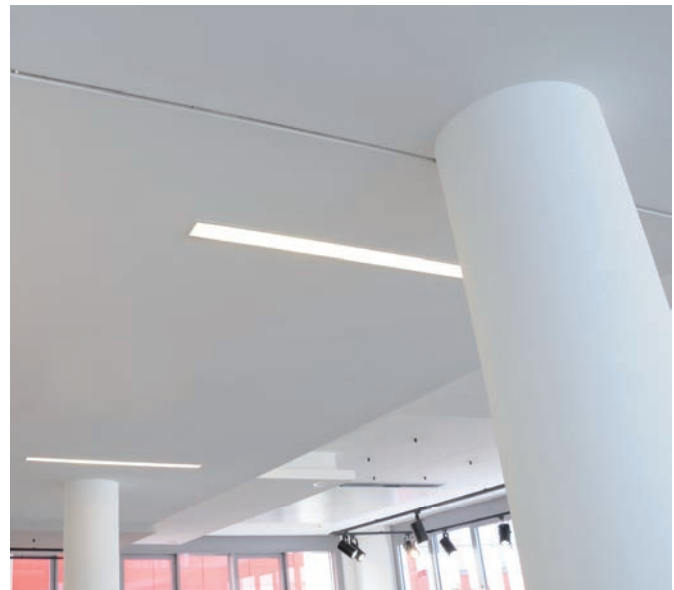
Attention: Applying paint will affect acoustic properties of ceiling!



With circular motions, apply another coat to ceiling surface. Depending on degree of soiling, application quantity of acoustic plaster can vary.



Application quantity
 approx. 900 - 1,100 g/m²



Quantities required for final coating per m² (not considering loss or waste)

Item number	Item description	Unit	Quantity
90501300	Vogl primer Supergrund LF	l	approx. 0.15
90604000	VoglToptec Special Adhesive	kg	approx. 0.30
90605000	VoglToptec plaster base fleece	m²	approx. 1.00
90602000	VoglToptec Akustik Nano SF	kg	approx. 2.70 - 3.00
90602100	VoglToptec Akustik Color Nano SF	kg	approx. 3.00 - 3.50